



Step 1 - Display Assembly

- We are currently working on a better method to open the iPad. This method will open the iPad, but will almost certainly result in broken retaining clips.
- Insert a metal spudger between the top edge of the display assembly and the rear panel assembly.
- Rotate the spudger away from you to release the tabs along the top edge of the display.
- Insert a second metal spudger between the top edge of the display assembly and the rear panel assembly to keep the tabs from snapping back into place.



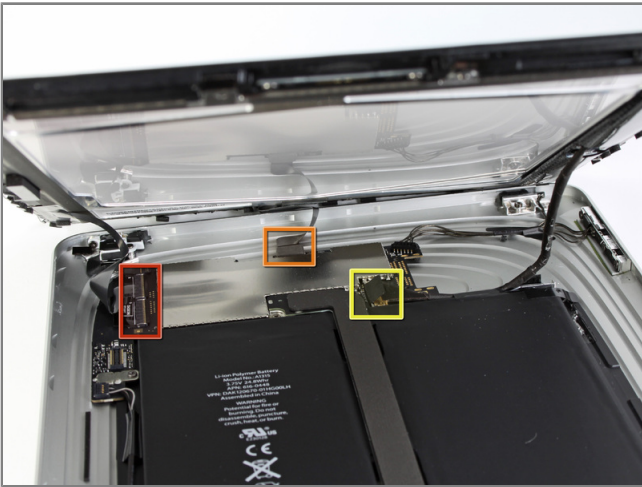
Step 2

- With one spudger, work your way along the right edge of the iPad, releasing tabs as you go.



Step 3

- Lift the display assembly away from the rear panel assembly by its right edge.
- Do not attempt to remove the display at this time, as it is attached to the rear panel assembly.



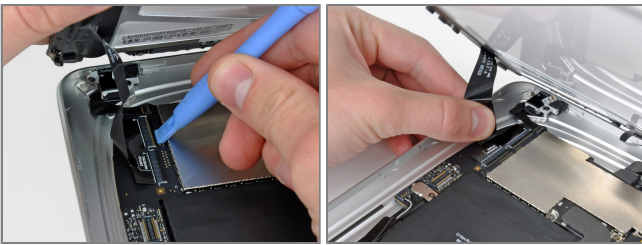
Step 4

- In the following steps, you will disconnect the three cables attaching the display assembly to the logic board. The cables are for the following components:
 - Digitizer
 - Ambient Light Sensor
 - Display Data Cable



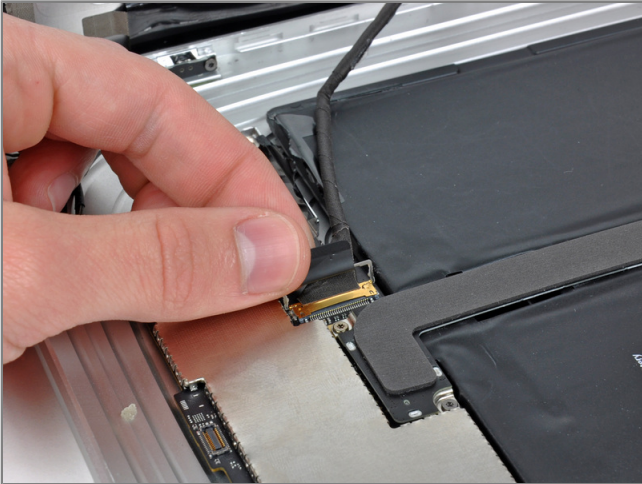
Step 5

- Use the edge of an iPod opening tool to flip up the retaining flaps holding the digitizer ribbon cables in their sockets on the logic board.
- Be sure you are flipping up the retaining flap, **not** the socket itself.
- Pull the digitizer ribbon cables straight out of their sockets.



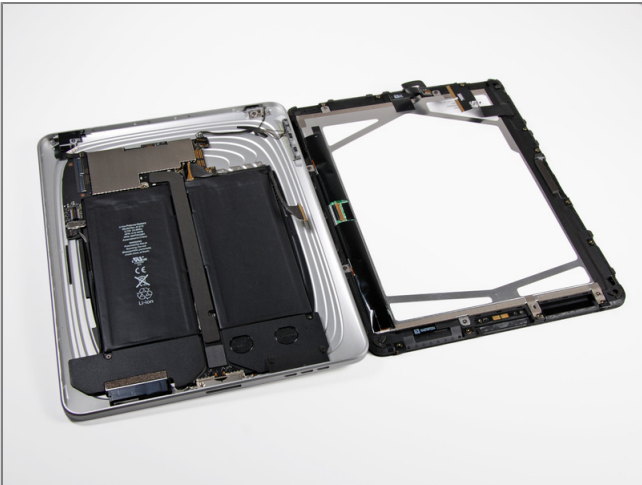
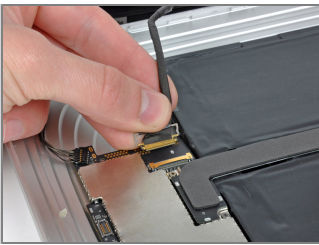
Step 6

- Use an iPod opening tool to remove the ambient light sensor connector from its socket by gently prying upward.



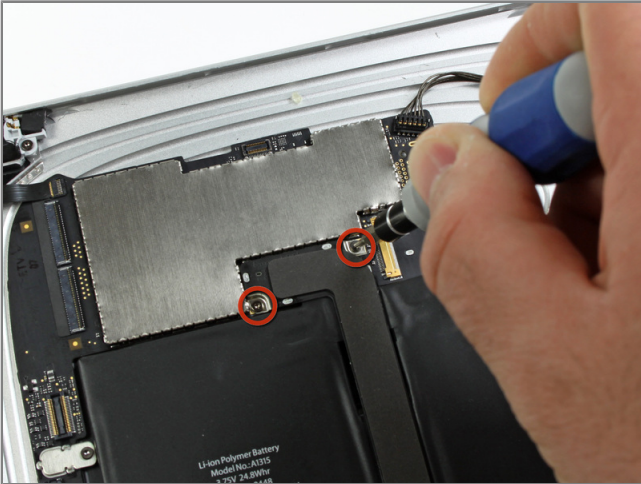
Step 7

- Disconnect the display data cable from the main board by flipping up the metal retainer by its black plastic pull tab.
- Pull the cable connector away from its socket.
- Pull the connector parallel to the face of the logic board.



Step 8

- Remove the display assembly from the rear panel assembly.



Step 9 - Dock Connector Cable

- Remove the two 4.56 mm T4 Torx screws securing the dock connector cable to the main board.



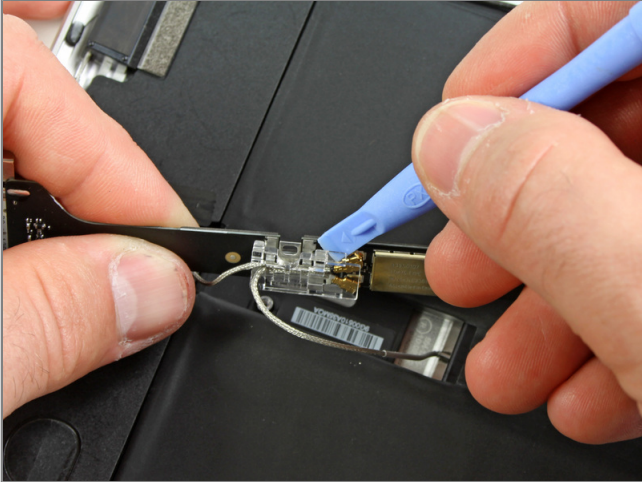
Step 10

- Remove the single 2.84 mm T4 Torx screw connecting the dock connector cable to the rear case assembly.



Step 11

- Remove the two 2.84 mm T4 Torx screws securing the dock connector cable to the rear panel assembly.



Step 12

- Carefully remove the plastic cover over the WiFi/Bluetooth board and dock connector cable using an iPod opening tool.



Step 13

- Pry the Wi-Fi and Bluetooth antennas up off their respective sockets on the Wi-Fi/Bluetooth board.
- Remove the dock connector cable from the rear panel assembly.



Step 14 - Speakers

- Use the edge of an iPod opening tool to disconnect the speaker connector from the logic board.
- Pry up from beneath the wires.



Step 15

- Remove the two 2.84 mm Torx screws securing the speaker assembly to the rear panel assembly.
- If necessary, remove the tape covering the Wi-Fi cables.



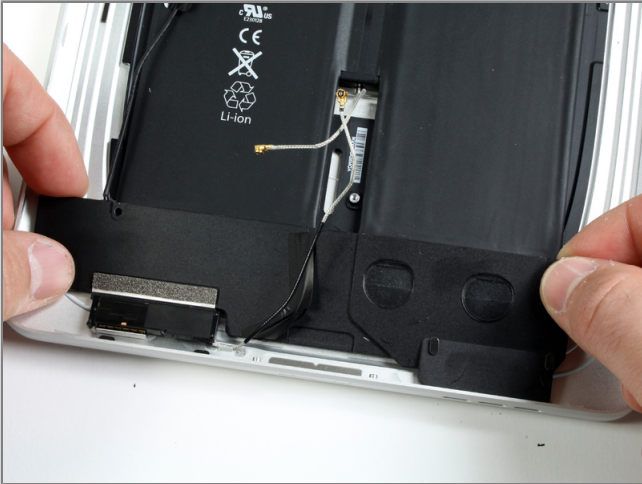
Step 16

- De-route the Wi-Fi antenna through its channel in the speaker assembly.



Step 17

- Deroute the speaker cable connector through the left side of the rear panel assembly.



Step 18

- Lift the speaker assembly and push it forward until the ports clear the bottom side of the rear panel assembly.
- Remove the speaker assembly out of the rear panel assembly.